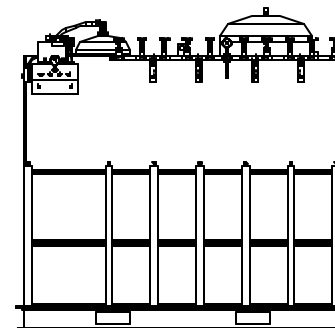
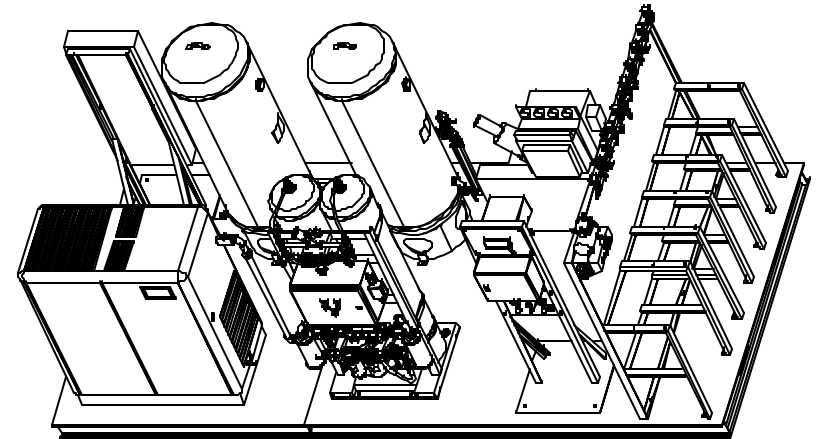
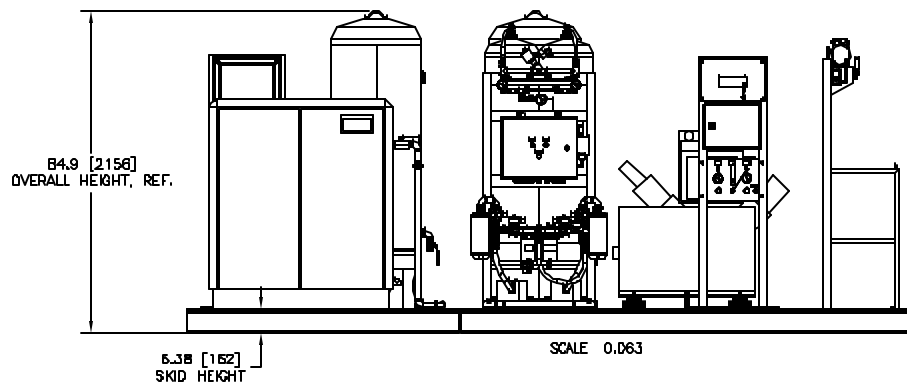
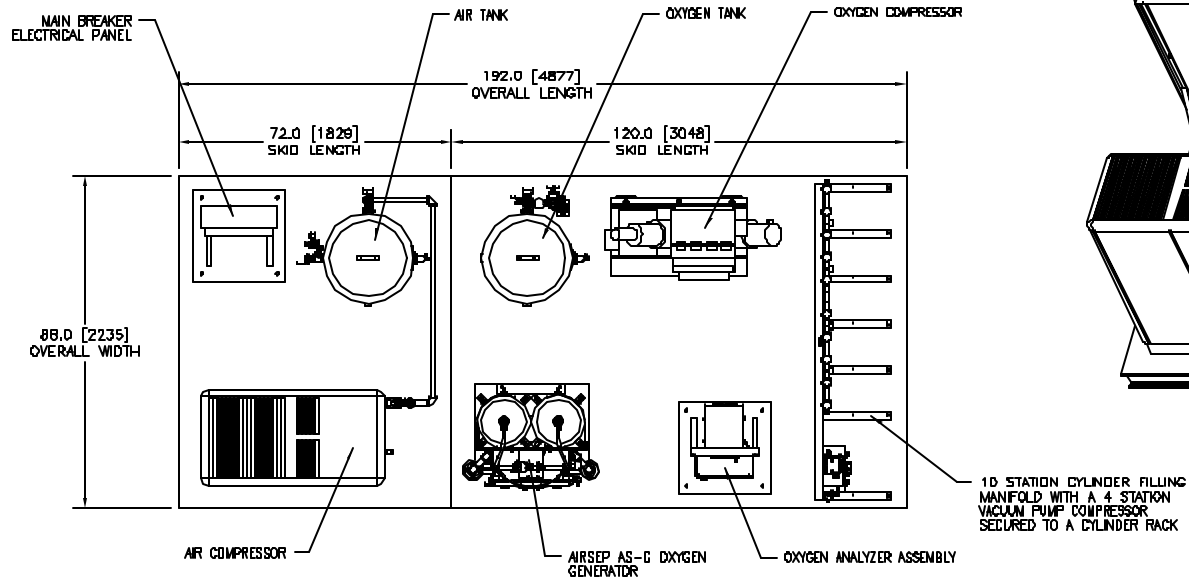


NOTES:

- 1.) DIMENSIONS SHOWN ARE IN INCHES [MILLIMETERS].
- 2.) DRAWING SHOWS MAIN COMPONENTS ONLY, DRAWING TO BE USED TO SHOW SYSTEM LAYOUT ONLY.
- 3.) TOTAL WEIGHT OF SYSTEM WILL VARY BASED ON CUSTOMER'S SITE CONDITIONS AND COMPONENT SPECIFICATIONS. TOTAL WEIGHT OF SYSTEM MAY VARY ANYWHERE BETWEEN 8,000 - 8,500 LBS [3,629 - 3,856 Kg]



DRAWING SUBJECT TO CHANGE WITHOUT NOTICE

REV	REVISION	CON #	BY	DATE	APPRO

APPROVAL		DATE		
DESIGNED BY	DATE	12/18/05	AIRSEP CORPORATION 3225-3260000 CYLINDER FILLING TYPICAL PLANT LAYOUT	
CHECKED BY	DATE	12/18/05	W/A 1:000 SHEET 1 OF 1	
SEE BOM			3225-3260000 1:000 SHEET 1 OF 1	

AIRSEP ASG225-320NCR(M) CYLINDER FILLING PLANT

TYPICAL PLANT LAYOUT

